



Introduction

The device is Touch Key Access Controller with WiFi-enabled Intercom. People can install the APP for intercom with their smart phone, and program the access controller by touch key. It is compatible with both iOS (7.0 above) and Android (4.3 above).

Features:

Intercom

- > 2.4G WiFi connection
- > Android and iOS available
- > Full duplex voice intercom
- > 2MP+wide angle camera and night vision
- > Support TF card with unlimited capacity
- > Support motion detection, playback, take picture/video, unlock remotely

Access Control

- > Touch key with one relay, 1000 users (988 common+2 panic+10 visitor)
- > PIN Length: 4-6 digits
- > EM card, Mifare card optional
- > Wiegand 26-44 bits input & output
- > Can be used as Wiegand reader with LED & buzzer
- > User data can be transferred
- > 2 devices can be interlocked for 2 doors

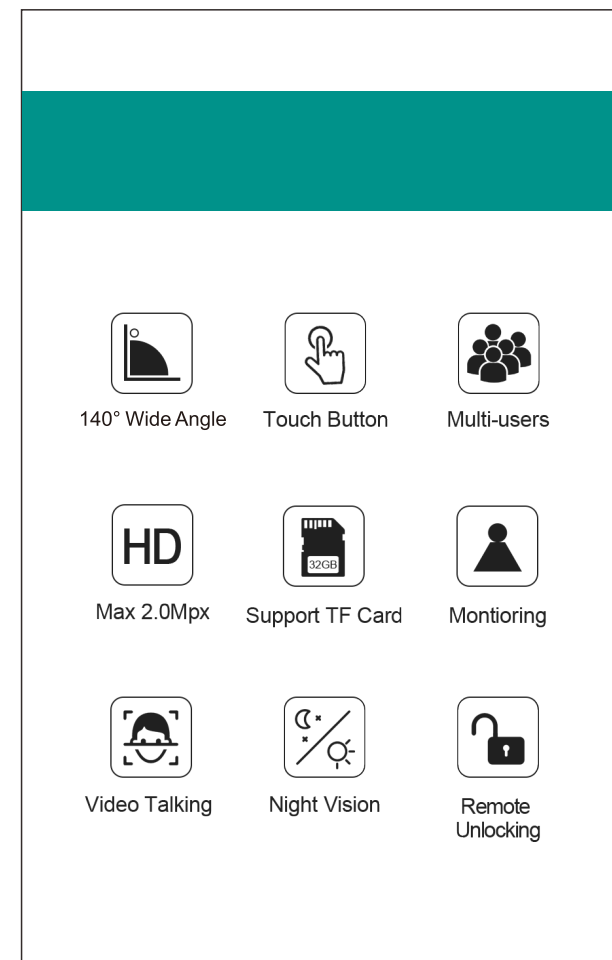
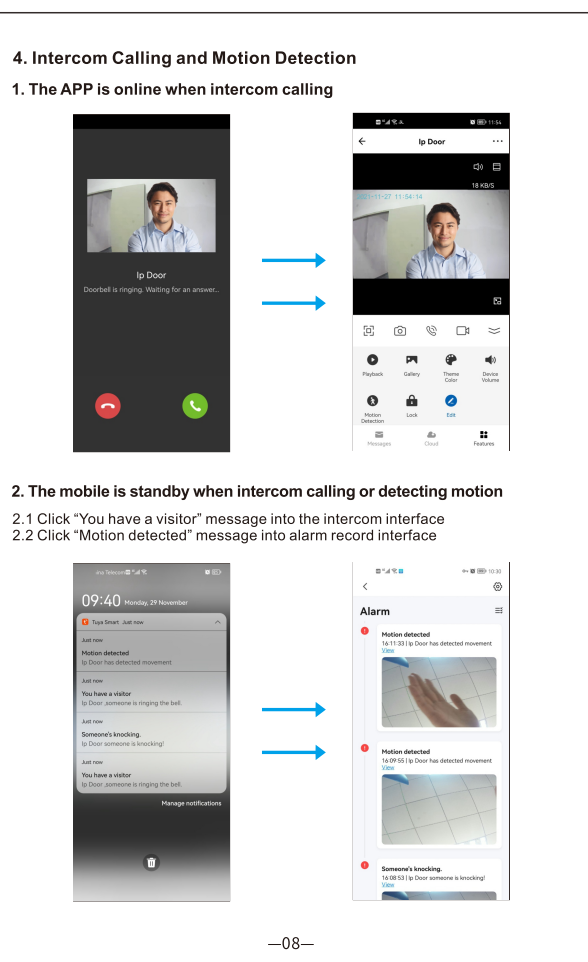
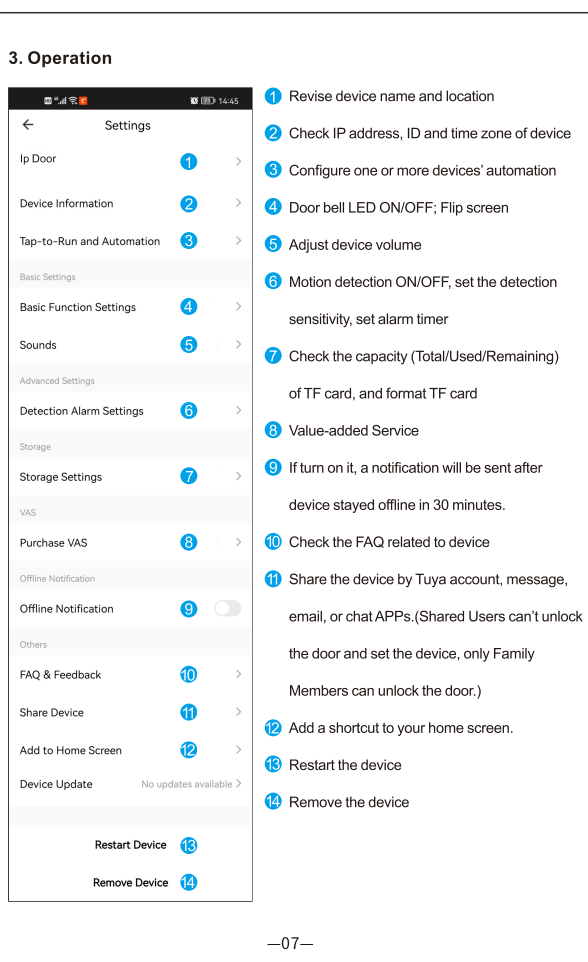
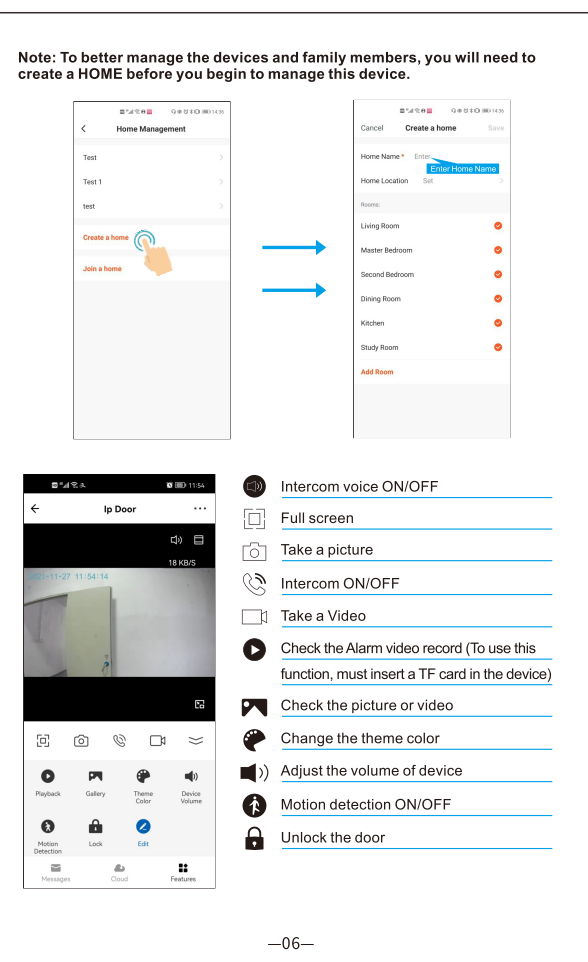
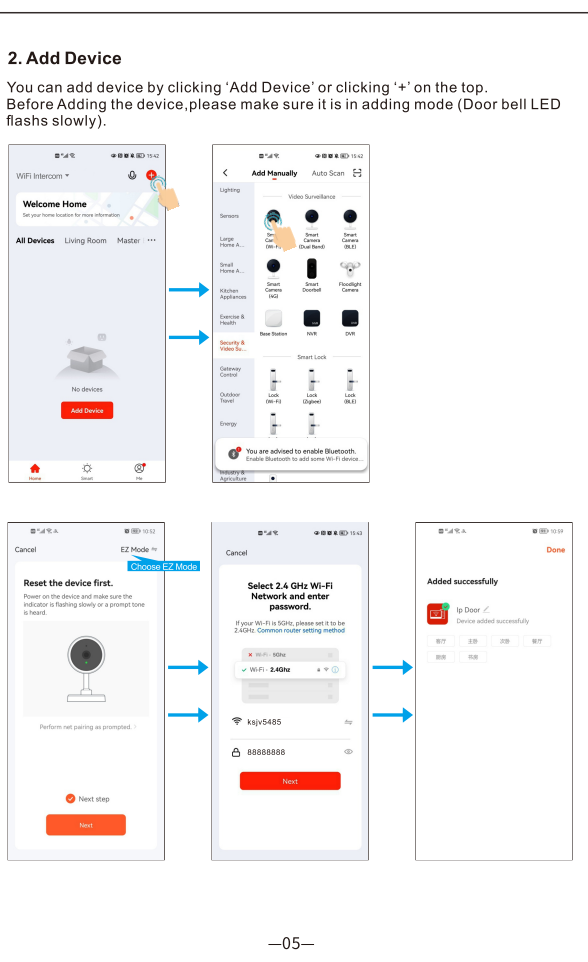
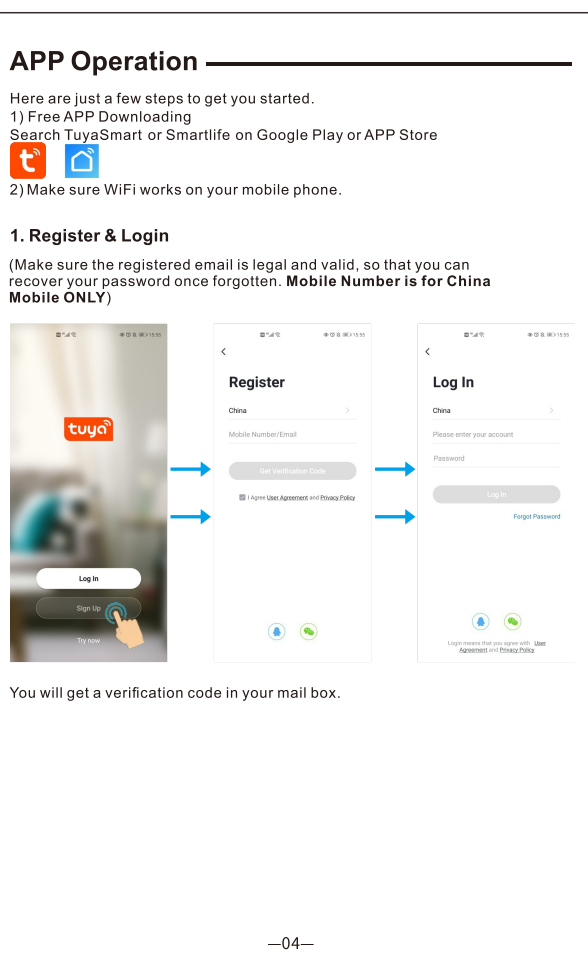
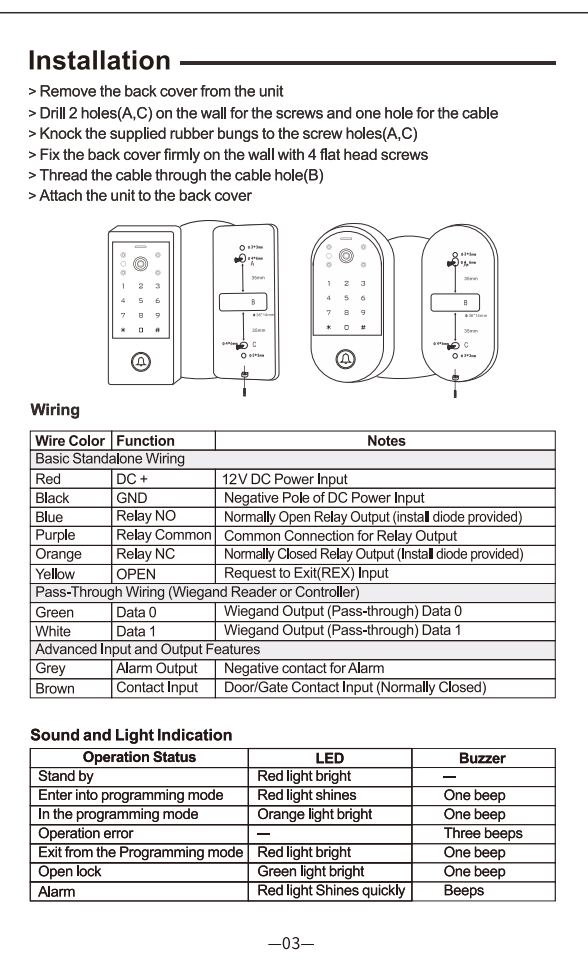
Specification:

Network	2.4G WiFi connection
Pixel	2.0Mpx (1080P)
Visual Angle	Horizontal 140° wide angle
Night Vision	IR-CUT (Colorful at daytime, black and white at night)
Extended Memory	TF card with unlimited capacity
Intercom	Full duplex voice intercom
Other Functions	Motion detection; Playback; Take picture/video; Unlock remotely

User Capacity	1000
Common User	988
Visitor User	10
Panic User	2
PIN Length	4-6 digits
Proximity Card Reader	EM or Mifare
Radio Technology	125KHz/13.56MHz
Read Range	2-6cm
Wiring Connections	Relay output, exit button, alarm, door contact, Wiegand input/output
Relay	One (NO, NC, Common)
Adjustable Relay Output	0-99 Seconds (5 seconds default)
Time Lock Output Load	2 Amp Maximum
Wiegand interface	EM card version: Wiegand 26-44 bits input & output (Factory default; Wiegand 26bits)
Mifare card version: Wiegand 26-44 bits input & output (Factory default; Wiegand 30bits)	
4 bits, 8 bits (ASCII), 10 digits Virtual Number (Factory default: 4bits)	
PIN Output	
Operating Voltage	DC 12V
Idle Current	<150mA
Active Current	<250mA
Environment	Indoor
Operating Temperature	-20°C ~ 60°C (4°F ~ 140°F)
Operating Humidity	0%RH ~ 85%RH
Physical Color	Zinc-Alloy
Dimensions	145 x W8 x D25(mm) Rectangle
Unit Weight	450g (Rectangle) / 400g (Ellipse)
Shipping Weight	550g (Rectangle) / 500g (Ellipse)

Cartoon Inventory:

- Diode B44004 (For relay circuit protection)
- Wall Anchors
- Self Tapping Screws: 9x27mm
- Screw Driver
- Master Card



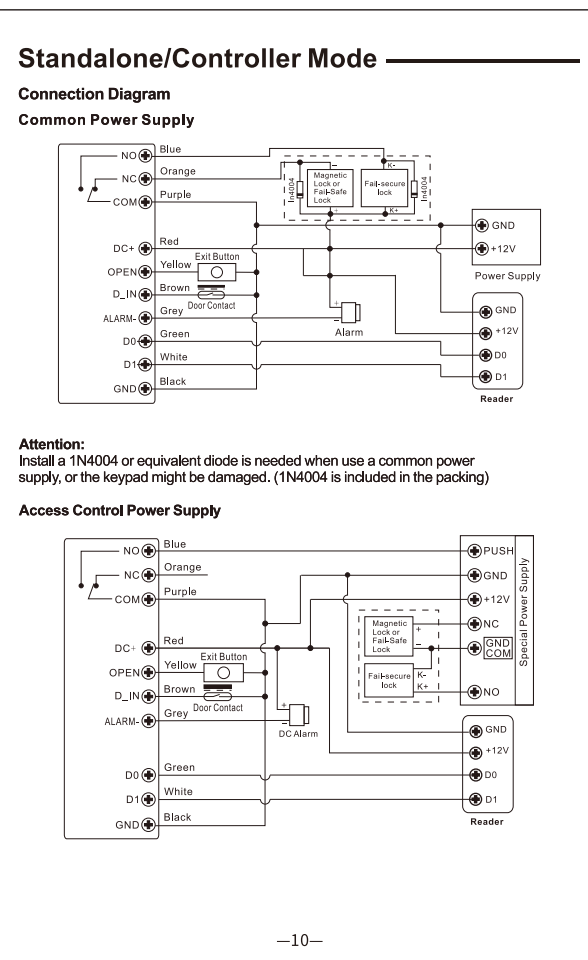
Note: There are two ways to check the alarm record

- Click the Message button in the intercom interface
- Check in the Message Center

Keypad Operation

Basic Configure:

Function	Keystroke Steps	Notes
Set master code	*(Master Code) # 0 (New Code) # (Repeat New Code) #	Default Master Code is 123456
Standalone/Controller mode	*(Master Code) # 7 7 #	To put the device back to its default factory working mode
Wiegand reader mode	*(Master Code) # 7 8 #	Wiegand output
Exit	*	Press * to exit programming



Users Management:

Function	Keystroke Steps	Notes
Add common card user	*(Master Code) # 1 (Read card) / (Input 8/10 digits card number) # *(Master Code) # 1 (User ID) # (Read card) / (Input 8/10 digits card number) # *(Master Code) # 1 (User ID) # (Card quantity) # (The first card card number / PIN) #	Using auto ID, the cards can be added continuously. Select specific ID, ID number: 0-987 Select specific ID, ID number: 0-987
Add common PIN user	*(Master Code) # 1 (PIN) #	Using auto ID, the PINs can be added continuously
Add panic user	*(Master Code) # 1 (User ID) # (PIN) # *(Master Code) # 1 (User ID) # (Read card) / (Input 8/10 digits card number / PIN) #	Select specific ID, ID number: 0-987 User ID number is 988,989; PIN length: 4-6 digits except 8888
Add visitor user	*(Master Code) # 1 (User ID) # (0-9) # (Read card) / (Input 8/10 digits card number / PIN) #	(0-9) means times of usage, 0+10 times, after the certain number of times, the card/PIN become invalid automatically ID number: 999-999
Change PIN	*(User ID) # (Old PIN) # (New PIN) # (Repeat new PIN) #	PIN length: 4-6 digits except 8888
Change PIN of Card + PIN access mode	*(Read card) (Dig PIN) # (New PIN) # (Repeat new PIN) #	There will auto allocate PIN (8888) to cards when adding
Delete user	*(Master Code) # 2 (Read card) / (Input PIN) # *(Master Code) # 2 (User ID) #	Delete user by card/PIN, the users can be deleted continuously Delete user by ID number
Delete user	*(Master Code) # 2 (User ID) #	Delete user by card number
Exit	*(Master Code) # 2 (Master Code) #	Delete all users Press * to exit programming

Tips for PIN Security (Only valid for 6 digits PIN):

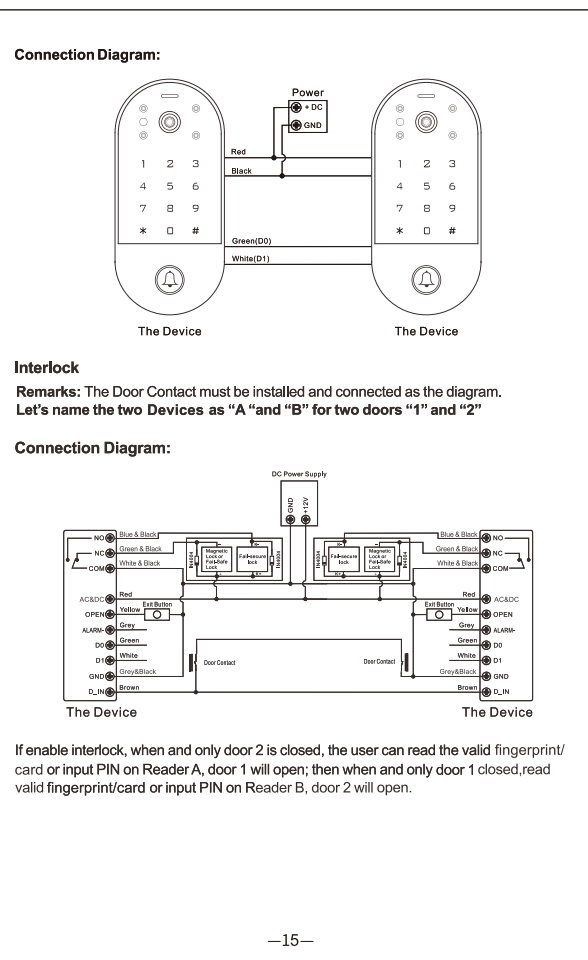
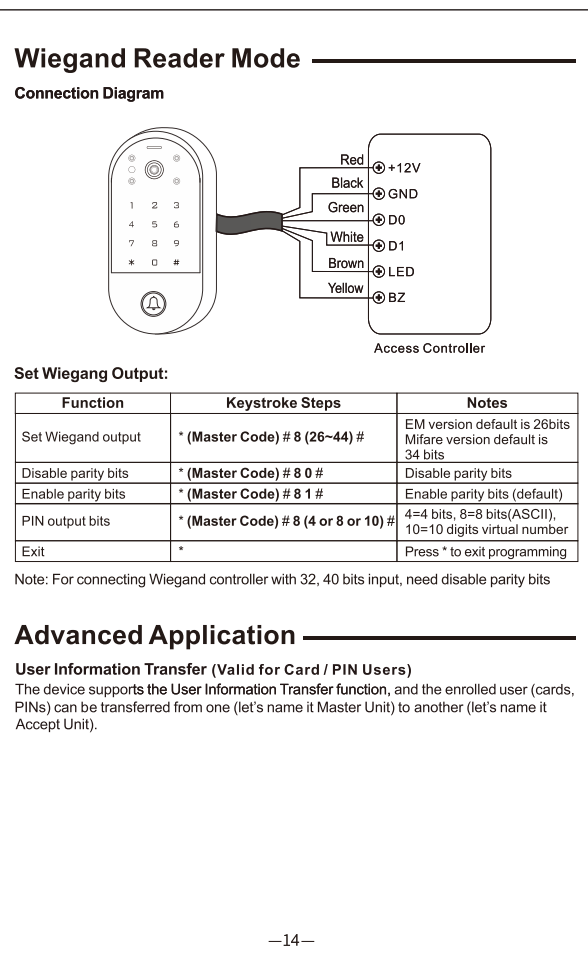
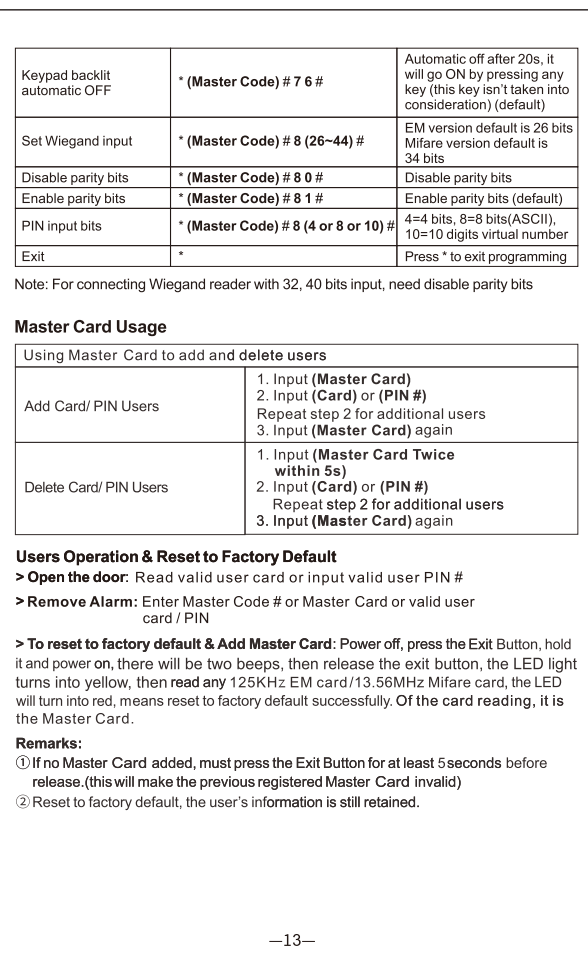
For higher security you allow you to hide your correct PIN with other numbers up to a max of 10 digits.
Example PIN: 123434
You could use *(123434) ** or *(123434)
(** can be any numbers from 0-9)

Set Access Mode:

Function	Keystroke Steps	Notes
Card access	*(Master Code) # 4 0 #	Entry by card only
PIN access	*(Master Code) # 4 1 #	Entry by PIN only
Card + PIN access	*(Master Code) # 4 2 #	Entry by card + PIN
Card or PIN access	*(Master Code) # 4 3 #	Entry by card or PIN (default)
Multi user access	*(Master Code) # 4 3 (2-9) #	Only after 2-9 valid users, the door can be opened. The interval time of reading can't exceed 5 seconds
Exit	*	Press * to exit programming

Operation Setting:

Function	Keystroke Steps	Notes
Relay time setting	*(Master Code) # 3 (1-99) #	Time range: 1-99s (default is 5 seconds)
Relay toggle mode	*(Master Code) # 3 0 #	Set the relay to ON/OFF toggle mode
Strike-Out OFF	*(Master Code) # 6 0 #	Normal mode (default)
Strike-Out ON	*(Master Code) # 6 1 #	Access will be denied for 10 minutes after 10 failed entry attempts (Exit button is still workable)
Strike-Out ON (Alarm)	*(Master Code) # 6 2 #	It will alarm after 10 failed entry attempts. Enter any valid card / PIN # (user or master) to silence
Disable door open detection	*(Master Code) # 6 3 #	Normal mode (default)
Enable door open detection (Request to connect magnetic contact)	*(Master Code) # 6 4 #	Door open too long (1 minutes) or door forced open detection. Enter any valid card / PIN # (user or master) to silence
Alarm time	*(Master Code) # 5 (0-3) #	It will alarm after 0-3 minutes, default is 1 minute
Disable sound	*(Master Code) # 7 0 #	Sound closed
Enable sound	*(Master Code) # 7 1 #	Sound activated (default)
LED always OFF	*(Master Code) # 7 2 #	LED is off under standby
LED always ON	*(Master Code) # 7 3 #	LED is on under standby (default)
Keypad backlit always OFF	*(Master Code) # 7 4 #	Turn off keypad backlit
Keypad backlit always ON	*(Master Code) # 7 5 #	Turn on keypad backlit



Advanced Setting:

Function	Keystroke Steps	Notes
Transfer users	*(Master Code) # 9 8 #	The master code of two devices must be same. Program on Master Units only
Disable interlock	*(Master Code) # 9 9 #	Disable interlock (default)
Enable interlock	*(Master Code) # 9 1 #	The users in two devices must completed same
Exit	*	Press * to exit programming

Simplified Instruction

Function Description	Operation
Enter the Programming Mode	* - Master Code - # then you can do the programming (123456 is the factory default master code)
Change the Master Code	0 - New Code - # - Repeat the New Code - # (code: 6 digits)
Add Card User	1 - Read Card - # (can add cards continuously)
Add PIN User	1 - PIN - # (The PIN is any 4-6 digits except 8888 which is reserved)
Delete User	2 - Read Card - # 2 - PIN - #
Exit from the Programming Mode	*
How to release the door	
Card User	Read Card
PIN User	Input PIN #
Mobile User	By Mobile